





10m 0 10m 20m 30m 40m



Artist's Impression

**ARRIVAL ZONE**

- 1 THE FOLIAGE DRIVE
- 2 THE WATERFALL
- 3 GUARDHOUSE
- 4 DROP OFF
- 5 GRAND COURT
- 6 ARRIVAL COURT
- 7 SIDE GATE

**FAMILY ZONE**

- 8 TENNIS COURT
- 9 HERB GARDEN
- 10 MIST GARDEN
- 11 MEDITATION DECK
- 12 FOREST CABANA
- 13 FOREST LOUNGE
- 14 GARDEN SWING
- 15 ALFRESCO LOUNGE
- 16 HAMMOCK GARDEN
- 17 TREE HOUSE DINING LOUNGE
- 18 THE LANTERN WALK
- 19 THE FLOWER GARDEN
- 20 REFLEXOLOGY PATH

**CLUB VIEW**

- 21 KID'S POOL WITH BUBBLE JET
- 22 50M POOL
- 23 MASSAGE JET
- 24 WATER BED
- 25 SUN DECK
- 26 POOLSIDE CABANA
- 27 ARRIVAL COURT

**INTERACTIVE ZONE**

- 28 RIVER VIEW GYMNASIUM
- 29 VIEWING PAVILION
- 30 DINING PAVILION
- 31 FUNCTION PAVILION
- 32 FOREST CLUB ROOM
- 33 KID'S PARTY PAVILION
- 34 WATER PLAY
- 35 TRAMPOLINE POD
- 36 PLAYGROUND
- 37 ADVENTURE PLAY
- 38 RIVERFRONT DINING VILLA WITH JET POOL

**EXECUTIVE ZONE**

- 39 WATERFRONT DINING VILLA WITH JET POOL
- 40 RIVERFRONT BBQ PAVILION
- 41 RIVERFRONT TRAIL
- 42 CO-WORKING SPACE
- 43 STUDY ALCOVE
- 44 READING LOUNGE
- 45 THE RETREAT
- 46 VIEW OUT PAVILION

**AUXILIARY**

- 47 SHOWER AND STEAM ROOM
- 48 TOILET

**OTHERS (LOCATED AT B1)**

- 49 CHILDCARE CENTRE
- 50 SHOPS
- 51 BIN CENTRE
- 52 ELECTRICAL SUBSTATION
- 53 GENSET



**SKY WELLNESS (TOWER 91)**

- 54 REFLEXOLOGY WALK
- 55 MEDITATION ALCOVE
- 56 SKY FITNESS
- 57 CABANA LOUNGE



**SKY GARDEN (TOWER 93)**

- 58 STAR GAZING CORNER
- 59 GARDEN WALK
- 60 VIEWING LOUNGE
- 61 CHESS GARDEN
- 62 SKY DINING
- 63 SKY GRILL

# SCHEMATIC DIAGRAM

ENJOY CHILDCARE  
CONVENIENCE RIGHT  
AT HOME



91 WEST COAST VALE S126755

UNIT/ FLOOR	6	1	2	3	4	5
36	PH3	PH2	PH1	PH4		
35	D1	C1	D3	D2s	B5s	C5s
34	D1	C1	D3	D2s	B5s	C5s
33	D1	C1	D3	D2s	B5s	C5s
32	D1	C1	D3	D2s	B5s	C5s
31	D1	C1	D3	D2s	B5s	C5s
30	D1	C1	D3	D2s	B5s	C5s
29	D1	C1	D3	D2s	B5s	C5s
28	D1	C1	D3	D2s	B5s	C5s
27	D1	C1	D3	D2s	B5s	C5s
26	D1	C1	D3	D2s	B5s	C5s
25	D1	C1	D3	D2s	B5s	C5s
24	D1	C1	D3	D2s	B5s	C5s
23	D1	C1	D3	D2s	B5s	C5s
22	D1	C1	D3	D2s	B5s	C5s
21	D1	C1	D3	D2s	B5s	C5s
20	D1	C1	D3	D2s	B5s	C5s
19	D1	C1	D3	D2s	B5s	C5s
18	D1	C1	D3	D2s	B5s	C5s
17	D1	C1	D3	D2s	B5s	C5s
16	D1	C1	D3	D2s	B5s	C5s
15	D1	C1	D3	D2s	B5s	C5s
14	D1	C1	D3	D2s	B5s	C5s
13	D1	C1	D3	D2s	B5s	C5s
12	D1	C1	D3	D2s	B5s	C5s
11	D1	C1	D3	D2s	B5s	C5s
10	D1	C1	D3	D2s	B5s	C5s
9	D1	C1	D3	D2s	B5s	C5s
8	D1	C1	D3	D2s	B5s	C5s
7	D1	C1	D3	D2s	B5s	C5s
6	D1	C1	D3	D2s	B5s	C5s
5	D1	C1	D3	D2s	B5s	C5s
4	D1	C1	D3	D2s	B5s	C5s
3	D1	C1	D3	D2s	B5s	C5s
2	D1	C1	D3	D2s	B5s	C5s
1						

93 WEST COAST VALE S126756

UNIT/ FLOOR	15	7	8	9	10	11	12	13	14
36	PH6	PH5	C3	B1	A2s	D1a			
35	C2	B3	B2	C4s	C3	B1	A2s	B4	A1
34	C2	B3	B2	C4s	C3	B1	A2s	B4	A1
33	C2	B3	B2	C4s	C3	B1	A2s	B4	A1
32	C2	B3	B2	C4s	C3	B1	A2s	B4	A1
31	C2	B3	B2	C4s	C3	B1	A2s	B4	A1
30	C2	B3	B2	C4s	C3	B1	A2s	B4	A1
29	C2	B3	B2	C4s	C3	B1	A2s	B4	A1
28	C2	B3	B2	C4s	C3	B1	A2s	B4	A1
27	C2	B3	B2	C4s	C3	B1	A2s	B4	A1
26	C2	B3	B2	C4s	C3	B1	A2s	B4	A1
25	C2	B3	B2	C4s	C3	B1	A2s	B4	A1
24	C2	B3	B2	C4s	C3	B1	A2s	B4	A1
23	C2	B3	B2	C4s	C3	B1	A2s	B4	A1
22	C2	B3	B2	C4s	C3	B1	A2s	B4	A1
21	C2	B3	B2	C4s	C3	B1	A2s	B4	A1
20	C2	B3	B2	C4s	C3	B1	A2s	B4	A1
19	C2	B3	B2	C4s	C3	B1	A2s	B4	A1
18	C2	B3	B2	C4s	C3	B1	A2s	B4	A1
17	C2	B3	B2	C4s	C3	B1	A2s	B4	A1
16	C2	B3	B2	C4s	C3	B1	A2s	B4	A1
15	C2	B3	B2	C4s	C3	B1	A2s	B4	A1
14	C2	B3	B2	C4s	C3	B1	A2s	B4	A1
13	C2	B3	B2	C4s	C3	B1	A2s	B4	A1
12	C2	B3	B2	C4s	C3	B1	A2s	B4	A1
11	C2	B3	B2	C4s	C3	B1	A2s	B4	A1
10	C2	B3	B2	C4s	C3	B1	A2s	B4	A1
9	C2	B3	B2	C4s	C3	B1	A2s	B4	A1
8	C2	B3	B2	C4s	C3	B1	A2s	B4	A1
7	C2	B3	B2	C4s	C3	B1	A2s	B4	A1
6	C2	B3	B2	C4s	C3	B1	A2s	B4	A1
5	C2	B3	B2	C4s	C3	B1	A2s	B4	A1
4	C2	B3	B2	C4s	C3	B1	A2s	B4	A1
3	C2	B3	B2	C4s	C3	B1	A2s	B4	A1
2	C2	B3	B2	C4s	C3	B1	A2s	B4	A1
1									

- 1-Bedroom  
A1
- 2-Bedroom  
B1, B2, B3, B4
- 3-Bedroom Executive  
C1
- 4-Bedroom Executive  
D1 & D1a
- Penthouse  
PH1, PH2, PH3, PH4, PH5, PH6
- 1-Bedroom + Study  
A2s
- 2-Bedroom + Study  
B5s
- 3-Bedroom Deluxe  
C2 & C3
- 3-Bedroom + Study  
C4s & C5s
- 4-Bedroom + Study  
D2s
- 4-Bedroom Deluxe  
D3

45 sq m / 484 sq ft  
#02-14 to #35-14

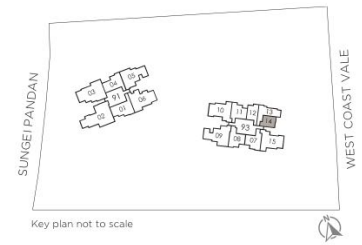


LEGEND

■ Wall not allowed to be hacked or altered (including by way of drilling)  
(Refer to the clause pertaining to Prefabricated Prefinished Volumetric Construction in the Sales & Purchase Agreement)



Area includes AC ledge and balcony. RC ledge and void are excluded from strata area.  
The plans are subject to changes as may be required or approved by relevant authorities.  
All areas and measurements stated herein are approximate and subject to final survey.  
Please refer to the key plan for orientation.

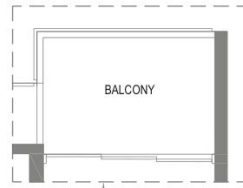
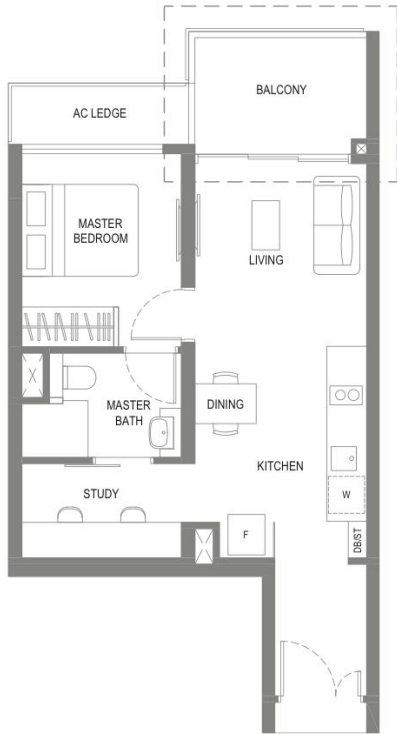


Key plan not to scale

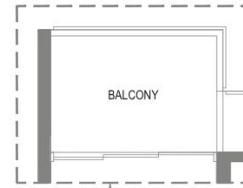
# 1-BEDROOM + STUDY

## TYPE A2s

53 sq m / 570 sq ft  
#02-12 to #36-12



APPLICABLE TO #36-12



APPLICABLE TO #36-11

# 2-BEDROOM

## TYPE B1

66 sq m / 710 sq ft  
#02-11 to #36-11

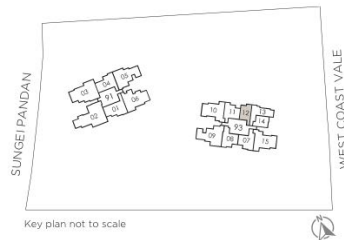


### LEGEND

Wall not allowed to be hacked or altered (including by way of drilling)  
(Refer to the clause pertaining to Prefabricated Prefinished Volumetric Construction in the Sales & Purchase Agreement)

0 1 2 3 4 5M

Area includes AC ledge and balcony. RC ledge and void are excluded from strata area. The plans are subject to changes as may be required or approved by relevant authorities. All areas and measurements stated herein are approximate and subject to final survey. Please refer to the key plan for orientation.



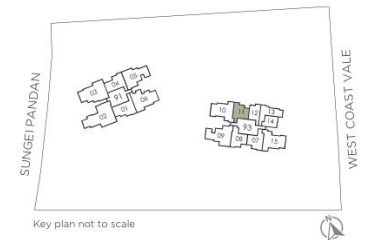
Key plan not to scale

### LEGEND

Wall not allowed to be hacked or altered (including by way of drilling)  
(Refer to the clause pertaining to Prefabricated Prefinished Volumetric Construction in the Sales & Purchase Agreement)

0 1 2 3 4 5M

Area includes AC ledge and balcony. RC ledge and void are excluded from strata area. The plans are subject to changes as may be required or approved by relevant authorities. All areas and measurements stated herein are approximate and subject to final survey. Please refer to the key plan for orientation.



Key plan not to scale

# 2 - BEDROOM TYPE B2

69 sq m / 743 sq ft  
#02-08 to #35-08

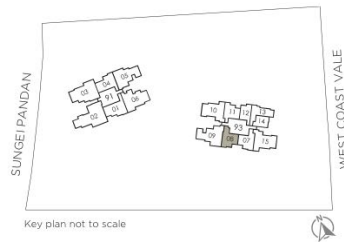


### LEGEND

Wall not allowed to be hacked or altered (including by way of drilling)  
(Refer to the clause pertaining to Prefabricated Prefinished Volumetric  
Construction in the Sales & Purchase Agreement)

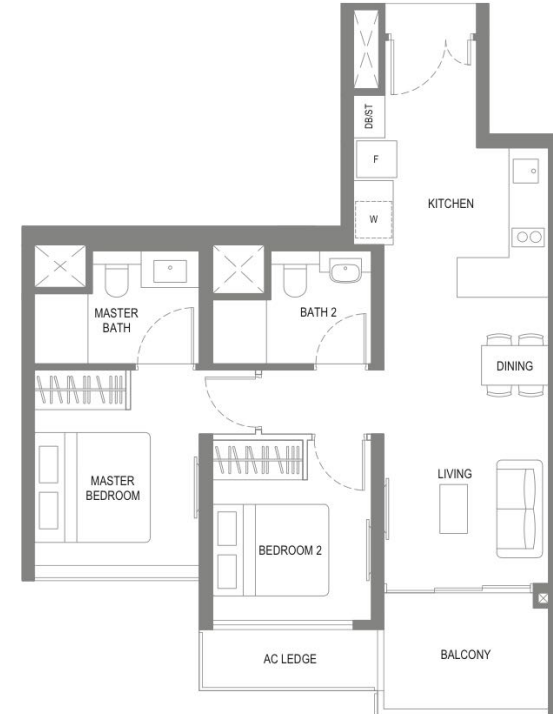
0 1 2 3 4 5M

Area includes AC ledge and balcony, RC ledge and void are excluded from strata area.  
The plans are subject to changes as may be required or approved by relevant authorities.  
All areas and measurements stated herein are approximate and subject to final survey.  
Please refer to the key plan for orientation.



# 2 - BEDROOM TYPE B3

68 sq m / 732 sq ft  
#02-07 to #35-07

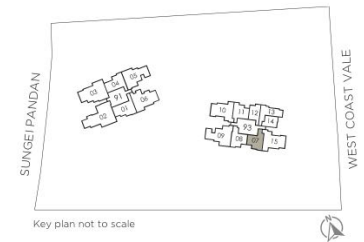


### LEGEND

Wall not allowed to be hacked or altered (including by way of drilling)  
(Refer to the clause pertaining to Prefabricated Prefinished Volumetric  
Construction in the Sales & Purchase Agreement)

0 1 2 3 4 5M

Area includes AC ledge and balcony, RC ledge and void are excluded from strata area.  
The plans are subject to changes as may be required or approved by relevant authorities.  
All areas and measurements stated herein are approximate and subject to final survey.  
Please refer to the key plan for orientation.



## 2 - BEDROOM

### TYPE B4

69 sq m / 743 sq ft  
#02-13 to #35-13

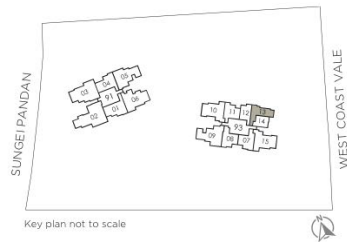


#### LEGEND

Wall not allowed to be hacked or altered (including by way of drilling)  
(Refer to the clause pertaining to Prefabricated Prefinished Volumetric Construction in the Sales & Purchase Agreement)

0 1 2 3 4 5M

Area includes AC ledge and balcony, RC ledge and void are excluded from strata area.  
The plans are subject to changes as may be required or approved by relevant authorities.  
All areas and measurements stated herein are approximate and subject to final survey.  
Please refer to the key plan for orientation.



## 2 - BEDROOM + STUDY

### TYPE B5s

76 sq m / 818 sq ft  
#02-04 to #35-04

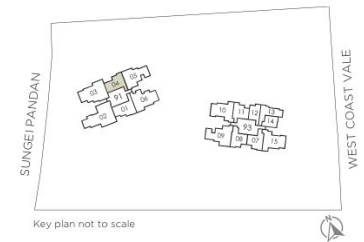


#### LEGEND

Wall not allowed to be hacked or altered (including by way of drilling)  
(Refer to the clause pertaining to Prefabricated Prefinished Volumetric Construction in the Sales & Purchase Agreement)

0 1 2 3 4 5M

Area includes AC ledge and balcony, RC ledge and void are excluded from strata area.  
The plans are subject to changes as may be required or approved by relevant authorities.  
All areas and measurements stated herein are approximate and subject to final survey.  
Please refer to the key plan for orientation.



# 3 - BEDROOM

# 3 - BEDROOM EXECUTIVE TYPE C1

84 sq m / 904 sq ft  
#02-01 to #35-01

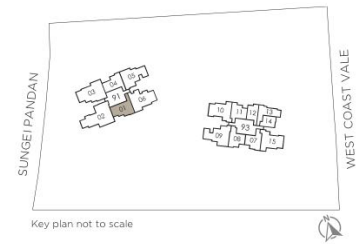


### LEGEND

■ Wall not allowed to be hacked or altered (including by way of drilling)  
(Refer to the clause pertaining to Prefabricated Prefinished Volumetric Construction in the Sales & Purchase Agreement)



Area includes AC ledge and balcony. RC ledge and void are excluded from strata area.  
The plans are subject to changes as may be required or approved by relevant authorities.  
All areas and measurements stated herein are approximate and subject to final survey.  
Please refer to the key plan for orientation.



Key plan not to scale



# 3-BEDROOM DELUXE TYPE C2

99 sq m / 1066 sq ft  
#02-15 to #35-15

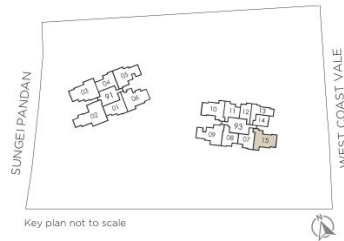


### LEGEND

Wall not allowed to be hacked or altered (including by way of drilling)  
(Refer to the clause pertaining to Prefabricated Prefinished Volumetric Construction in the Sales & Purchase Agreement)

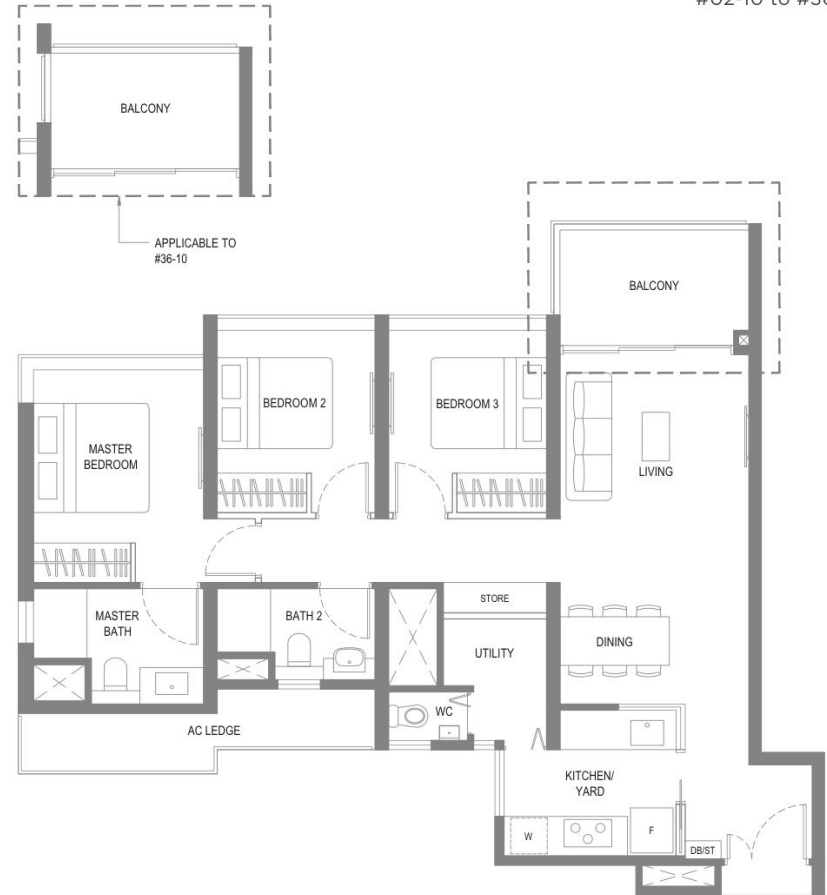


Area includes AC ledge and balcony, RC ledge and void are excluded from strata area. The plans are subject to changes as may be required or approved by relevant authorities. All areas and measurements stated herein are approximate and subject to final survey. Please refer to the key plan for orientation.



# 3-BEDROOM DELUXE TYPE C3

98 sq m / 1055 sq ft  
#02-10 to #36-10

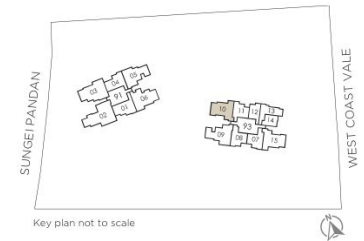


### LEGEND

Wall not allowed to be hacked or altered (including by way of drilling)  
(Refer to the clause pertaining to Prefabricated Prefinished Volumetric Construction in the Sales & Purchase Agreement)



Area includes AC ledge and balcony, RC ledge and void are excluded from strata area. The plans are subject to changes as may be required or approved by relevant authorities. All areas and measurements stated herein are approximate and subject to final survey. Please refer to the key plan for orientation.



# 3-BEDROOM + STUDY

## TYPE C4s

110 sq m / 1184 sq ft  
#02-09 to #35-09

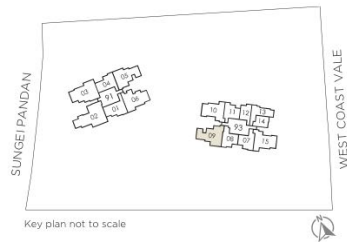


### LEGEND

Wall not allowed to be hacked or altered (including by way of drilling)  
(Refer to the clause pertaining to Prefabricated Prefinished Volumetric Construction in the Sales & Purchase Agreement)



Area includes AC ledge and balcony, RC ledge and void are excluded from strata area. The plans are subject to changes as may be required or approved by relevant authorities. All areas and measurements stated herein are approximate and subject to final survey. Please refer to the key plan for orientation.



# 3-BEDROOM + STUDY

## TYPE C5s

106 sq m / 1141 sq ft  
#02-05 to #35-05

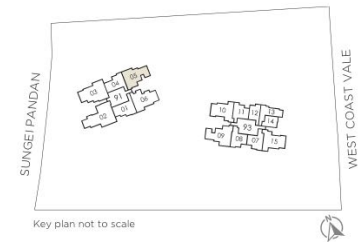


### LEGEND

Wall not allowed to be hacked or altered (including by way of drilling)  
(Refer to the clause pertaining to Prefabricated Prefinished Volumetric Construction in the Sales & Purchase Agreement)



Area includes AC ledge and balcony, RC ledge and void are excluded from strata area. The plans are subject to changes as may be required or approved by relevant authorities. All areas and measurements stated herein are approximate and subject to final survey. Please refer to the key plan for orientation.



# 4 - BEDROOM

# 4-BEDROOM EXECUTIVE TYPE D1

116 sq m / 1249 sq ft  
#02-06 to #35-06

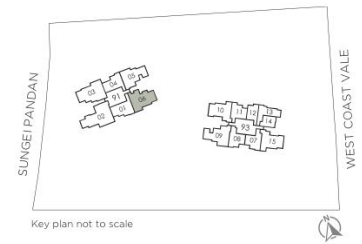


### LEGEND

■ Wall not allowed to be hacked or altered (including by way of drilling)  
(Refer to the clause pertaining to Prefabricated Prefinished Volumetric Construction in the Sales & Purchase Agreement)

0 1 2 3 4 5M

Area includes AC ledge and balcony, RC ledge and void are excluded from strata area.  
The plans are subject to changes as may be required or approved by relevant authorities.  
All areas and measurements stated herein are approximate and subject to final survey.  
Please refer to the key plan for orientation.



# 4-BEDROOM EXECUTIVE TYPE D1a

115 sq m / 1238 sq ft  
#36-13

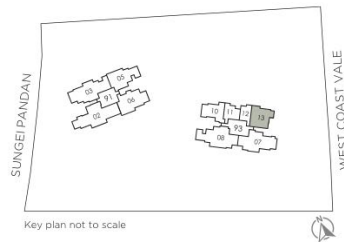


### LEGEND

■ Wall not allowed to be hacked or altered (including by way of drilling)  
(Refer to the clause pertaining to Prefabricated Prefinished Volumetric Construction in the Sales & Purchase Agreement)



Area includes AC ledge and balcony, RC ledge and void are excluded from strata area. The plans are subject to changes as may be required or approved by relevant authorities. All areas and measurements stated herein are approximate and subject to final survey. Please refer to the key plan for orientation.



# 4-BEDROOM + STUDY TYPE D2s

128 sq m / 1378 sq ft  
#02-03 to #35-03

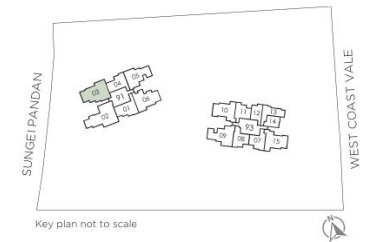


### LEGEND

■ Wall not allowed to be hacked or altered (including by way of drilling)  
(Refer to the clause pertaining to Prefabricated Prefinished Volumetric Construction in the Sales & Purchase Agreement)



Area includes AC ledge and balcony, RC ledge and void are excluded from strata area. The plans are subject to changes as may be required or approved by relevant authorities. All areas and measurements stated herein are approximate and subject to final survey. Please refer to the key plan for orientation.



# 4 - BEDROOM DELUXE TYPE D3

141 sq m / 1518 sq ft  
#02-02 to #35-02

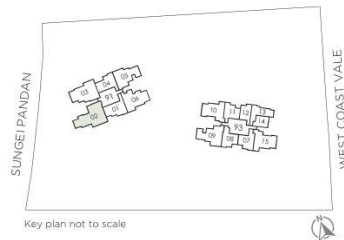


### LEGEND

Wall not allowed to be hacked or altered (including by way of drilling)  
(Refer to the clause pertaining to Prefabricated Prefinished Volumetric  
Construction in the Sales & Purchase Agreement)

0 1 2 3 4 5M

Area includes AC ledge and balcony. RC ledge and void are excluded from strata area.  
The plans are subject to changes as may be required or approved by relevant authorities.  
All areas and measurements stated herein are approximate and subject to final survey.  
Please refer to the key plan for orientation.



Developer: CSC Land Group (Singapore) Pte Ltd (UEN No. 201707167K) • Developer Licence No.: C1229 • Lot No.: Lot 9112P MK 5 at West Coast Vale  
• Tenure of Land: 99 years commencing from 15 May 2017 • Encumbrances on the Land: Caveat(s) / Mortgage(s) in favour of DBS Bank Ltd  
• Expected Date of Vacant Possession: 30 June 2022 • Expected Date of Legal Completion: 30 June 2025

Reasonable care has been taken in the preparation of this brochure, and the construction of the scale models and showflat (collectively "the Collaterals"), but the Developer and Marketing Agents cannot be held responsible for inaccuracies or omissions of the Collaterals. The statements, information and depictions in the Collaterals may not be relied upon as statements or representations of fact, and they are not intended to form any part of the contract for the sale of the housing units. In particular, visual representations such as pictures and drawings are artist's impressions only, and are not representations of fact. All information contained in the Collaterals, including equipment, materials, fittings, finishes, installations and appliances description, plans and specifications, are current at the time of printing, and are subject to changes as are required by the Developer or relevant authorities. The floor areas stated in the brochure are subject to final survey.